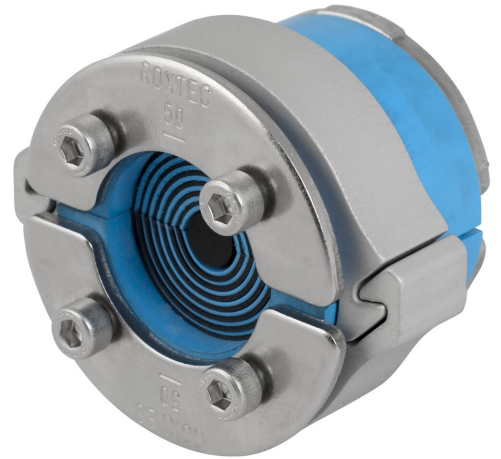




Roxtec C RS SLO afdichting

Ronde afdichting voor optimale ruimte- en gewichtsbesparing.

De Roxtec C RS SLO is een lichtgewicht en zeer effectieve afdichtoplossing voor het invoeren van een enkele kabel of leiding in kasten, behuizingen en apparatuur. De afdichtoplossing biedt bescherming tegen stof, water en brand en zorgt voor trillingsbestendige kabelbevestiging. Hierdoor is de afdichting uitstekend geschikt voor toepassingen in bijvoorbeeld rollend materieel. De oplossing bestaat uit een aanpasbare Roxtec C RS afdichting en een Roxtec C SLO bus. De C RS SLO is verkrijgbaar in vier verschillende maten voor kabels en leidingen van 4 tot 54 mm.



- Lichtgewicht
- Ruimtebesparend
- Geschikt voor kabels met connector
- Kan na installatie worden geopend

Producteigenschappen



Brandvertraging



IP/UL NEMA

Installatiestructuur



Kasten en behuizingen

Specificaties en certificaten

Brand

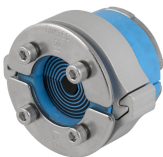
- E/EI-classificatie volgens EN 45545 E30

Dichtheid

- IP 66

Gegevens van afdichtcomponenten

Afdichtcomponenten



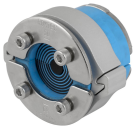
C RS SLO afdichting

Ga naar [roxtec.com](https://www.roxtec.com) voor uitgebreide informatie.



Vooraf geconfigureerde doorvoersets

mm/kg



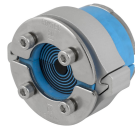
C RS SLO 43 ALU



C RS SLO 50 ALU



C RS SLO 68 ALU



C RS SLO 75 ALU

Titel	Configuratie	Afmetingen opening Ø	Gewicht	Art. nr.
C RS SLO 43 ALU	1x (4.0-23.0)	44 - 46	0.25	234690
C RS SLO 50 ALU	1x (8.0-30.0)	51 - 53	0.29	234691
C RS SLO 68 ALU	1x (26.0-48.0)	69 - 71	0.43	234692
C RS SLO 75 ALU	1x (24.0-54.0)	76 - 78	0.5	234694

The product information provided by Roxtec does not release the purchaser of the Roxtec system, or part thereof, from the obligation to independently determine the suitability of the products for the intended process, installation and/or use.

Roxtec gives no guarantee for the Roxtec system or any part thereof and assumes no liability for any loss or damage whatsoever, whether direct, indirect, consequential, loss of profit or otherwise, occurred or caused by the Roxtec systems or installations containing components not manufactured by an authorized manufacturer and/or occurred or caused by the use of the Roxtec system in a manner or for an application other than for which the Roxtec system was designed or intended.

Roxtec expressly excludes any implied warranties of merchantability and fitness for a particular purpose and all other express or implied representations and warranties provided by statute or common law. User determines suitability of the Roxtec system for intended use and assumes all risk and liability in connection therewith. In no event shall Roxtec be liable for indirect, consequential, punitive, special, exemplary or incidental damages or losses.

The Roxtec products are offered and sold in accordance with the conditions of the Roxtec General Terms of Sales. The latest version of the Roxtec General Terms of Sales can be downloaded from <https://www.roxtec.com/en/about-us/about-roxtec/general-terms-of-sales/>

We reserve the right to make changes to the product and technical information without further notice. Any errors in print or entry are no claims for indemnity. The content of this publication is the property of Roxtec International AB and is protected by copyright.

This document was generated on: 2024-09-27